

# PROFILTR

WE MAKE THE WORLD CLEANER

Application not only for the foundry, metallurgical, foodstuffs, chemical, wood-processing industries. Industrial filtration, capturing and separation of solid particles, droplets and aerosols, and gas impurities.

## CONTROL SYSTEM FOR FILTRATION AND AIR-CONDITIONING EQUIPMENT



# PROFILTR

WE MAKE THE WORLD CLEANER

Application not only for the foundry, metallurgical, foodstuffs, chemical, wood-processing industries. Industrial filtration, capturing and separation of solid particles, droplets and aerosols, and gas impurities.

## INDUSTRIAL APPLICATIONS, brief overview

Control system: Siemens Simatic S7



Alternative: ABB, Allen-Bradley, Schneider Electric, ...

Process control, monitoring and evaluation:

1. Energy consumption.
2. Control of the filter medium regeneration, based on pressure loss.
3. Vacuum control, based on under-pressure in the air-conditioning ducts.
4. Vacuum control, based on the number of exhausted places.
5. Ventilator vibrations, the engine switch-off temperature, temperatures of the engine bearings, operating hours, frequency, current, current consumption in kW, etc.



PRO – FILTR Brno, s.r.o.  
V pískách 400/20, 620 00 Brno, CZ  
tel.: + 420 606 437 179  
[profiltr@profiltr.cz](mailto:profiltr@profiltr.cz), [www.profiltr.cz](http://www.profiltr.cz)



# PROFILTR

**WE MAKE THE WORLD CLEANER**

**Application not only for the foundry, metallurgical, foodstuffs, chemical, wood-processing industries. Industrial filtration, capturing and separation of solid particles, droplets and aerosols, and gas impurities.**

Control of peripherals:

- Waste heat utilization, recuperation.
- Central collection of dust.
- Dosage of additives and sorbents in the exhaust gases.
- Communication with the superior system.

Access:

The control system is connected to the internal company network:

- Access is free.
- Local access via PC.
- Remote access via PC.
- Access via cell phone.

Immediate response:

- Start/Stop.
- Change in vacuum power.
- Switch-on/switch-off of the gas-burner heating, burner tests of the air-conditioning units.
- Opening and closing of the valves.

Operation information:

- Trends, archiving and data export
- Other data processing for evaluating operational costs
- Records of faults and failures
- Servicing and planning



**PRO – FILTR Brno, s.r.o.**  
**V pískách 400/20, 620 00 Brno, CZ**  
**tel.: + 420 606 437 179**  
**[profiltr@profiltr.cz](mailto:profiltr@profiltr.cz), [www.profiltr.cz](http://www.profiltr.cz)**





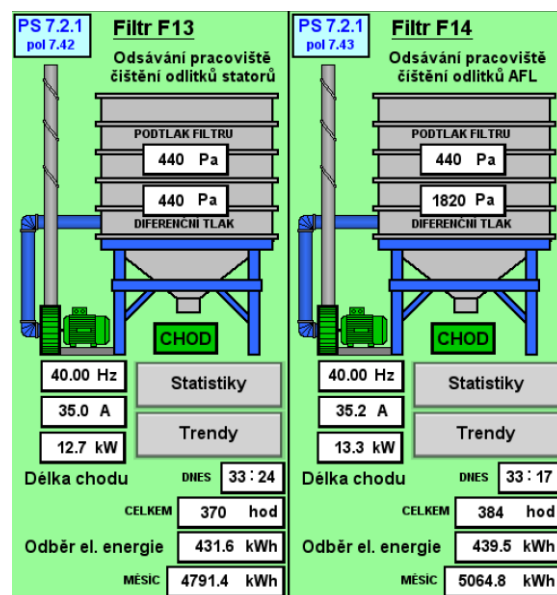
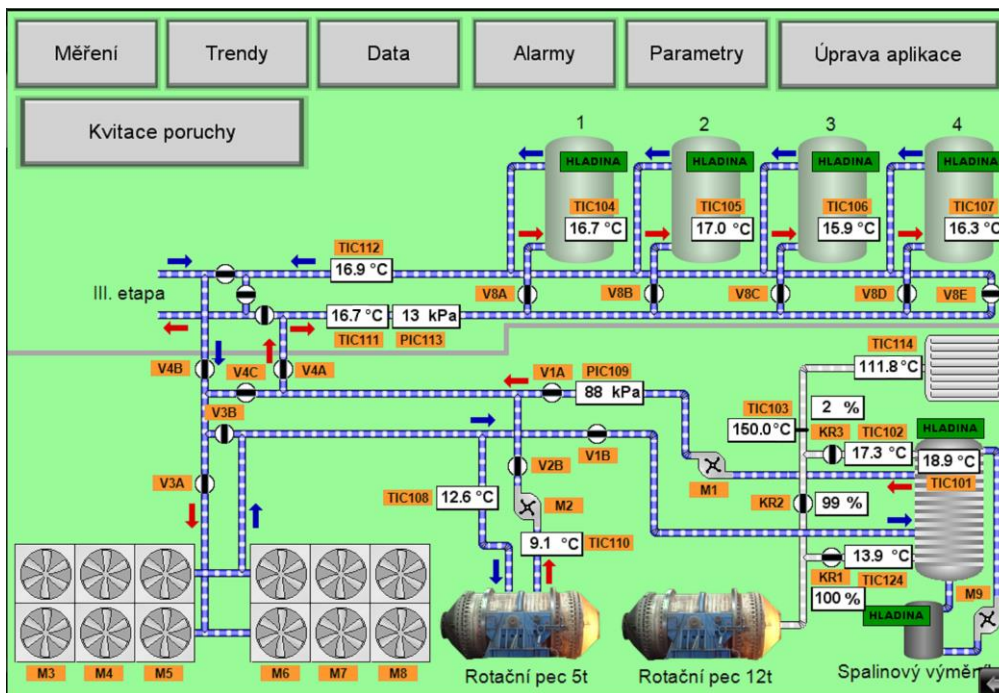
# PROFILTR

WE MAKE THE WORLD CLEANER

Application not only for the foundry, metallurgical, foodstuffs, chemical, wood-processing industries. Industrial filtration, capturing and separation of solid particles, droplets and aerosols, and gas impurities.

## Screenshots

Basic information level



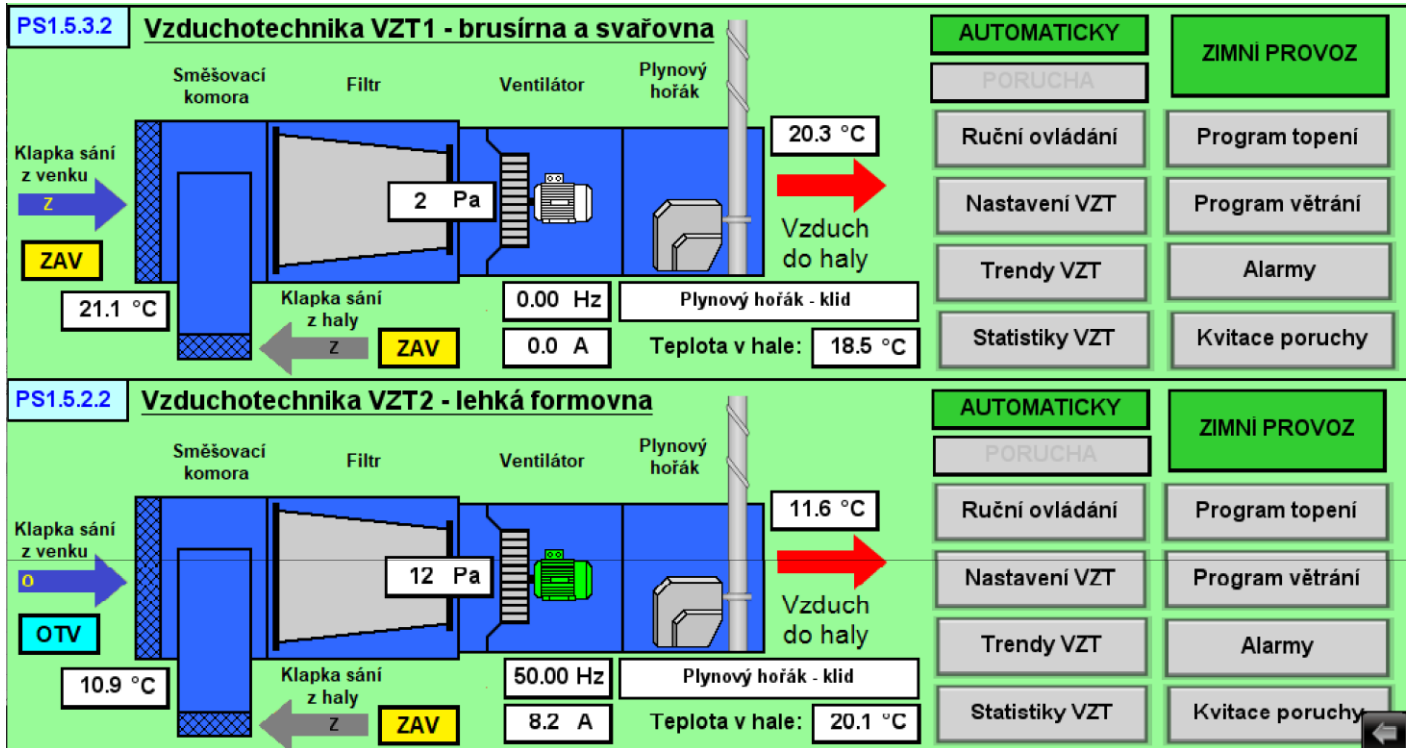
PRO – FILTR Brno, s.r.o.  
 V pískách 400/20, 620 00 Brno, CZ  
 tel.: + 420 606 437 179  
[profiltr@profiltr.cz](mailto:profiltr@profiltr.cz), [www.profiltr.cz](http://www.profiltr.cz)



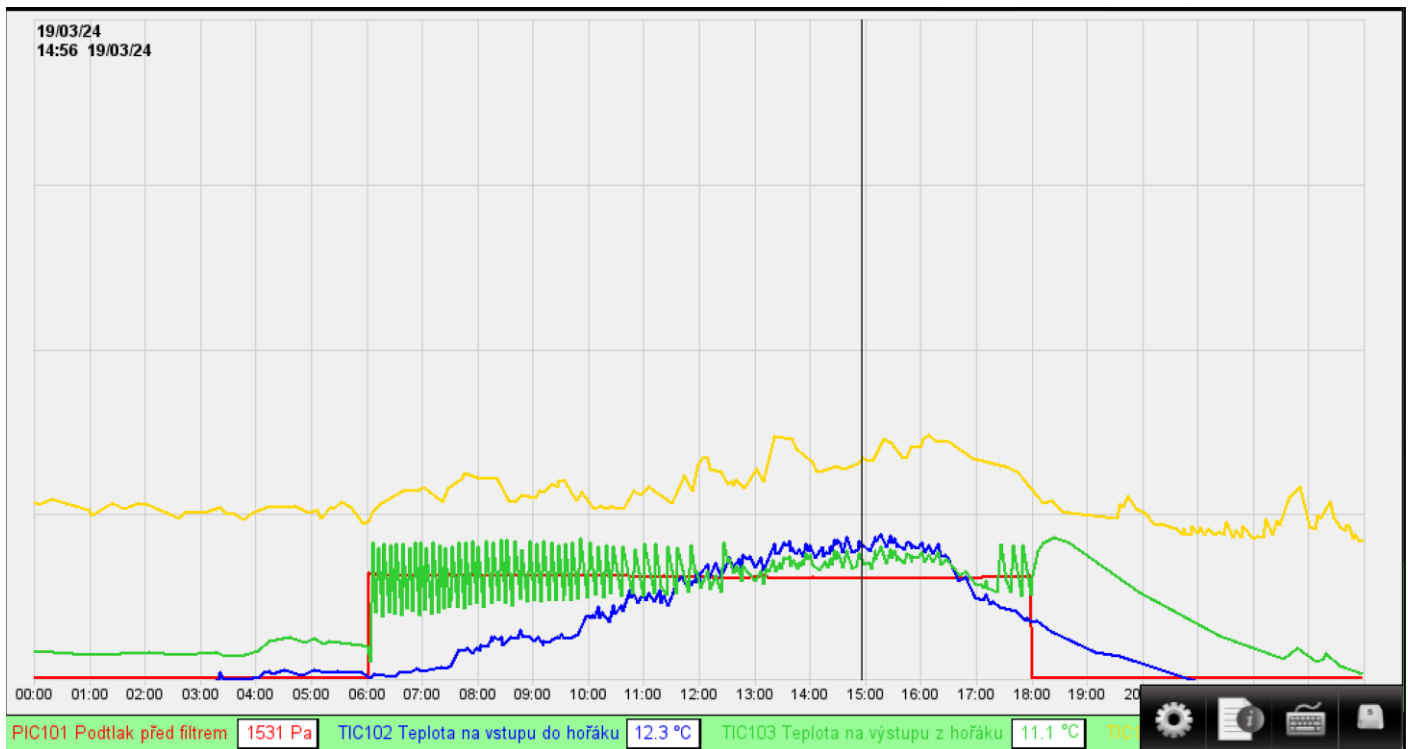
# PROFILTR

WE MAKE THE WORLD CLEANER

Application not only for the foundry, metallurgical, foodstuffs, chemical, wood-processing industries. Industrial filtration, capturing and separation of solid particles, droplets and aerosols, and gas impurities.



## Trends



PRO – FILTR Brno, s.r.o.  
V pískách 400/20, 620 00 Brno, CZ  
tel.: + 420 606 437 179  
profiltr@profiltr.cz, www.profiltr.cz



# PROFILTR

WE MAKE THE WORLD CLEANER

Application not only for the foundry, metallurgical, foodstuffs, chemical, wood-processing industries. Industrial filtration, capturing and separation of solid particles, droplets and aerosols, and gas impurities.

## Statistics

### Ventilátor vzduchotechniky

50.00 Hz   8.2 A   1.8 kW

	DNES	VČERA	MĚSIC	ROK	CELKEM
Délka chodu	0 : 26	7 : 0	86 hod	138 hod	223 hod
Odběr el. energie	0.8 kWh	12.6 kWh	143 kWh	0.22 MWh	0 MWh

### Hořák vzduchotechniky

	DNES	VČERA	MĚSIC	ROK	CELKEM
Délka chodu	0 : 0	0 : 0	2 hod	2 hod	2 hod
Odběr plynu	0.0 m <sup>3</sup>	0.0 m <sup>3</sup>	30 m <sup>3</sup>	32 m <sup>3</sup>	32 m <sup>3</sup>

Historie záznamů

<< 0 >>

Den	Ventilátor [hod]	Ventilátor [kWh]	Hořák [hod]	Hořák [m <sup>3</sup> ]
01.03.24	0.0	0.0	0.0	0.0
02.03.24	18.0	26.1	2.2	27.5
03.03.24	10.4	14.5	0.0	0.0
04.03.24	0.0	0.0	0.0	0.0
05.03.24	0.0	0.0	0.0	0.0
06.03.24	0.3	0.4	0.1	0.6
07.03.24	0.0	0.0	0.0	0.0
08.03.24	5.1	9.2	0.0	0.0
09.03.24	6.0	10.9	0.0	0.0
10.03.24	0.0	0.0	0.0	0.0

### Frekvenční měnič

Výstupní kmitočet	45.00 Hz	Vstupní svorky	57	VIBRACE
Napětí meziobvodu	527.0 V	Stav měniče	1	CHOD
Výstupní napětí	347 V	Kód poruchy	0	PORUCHA
Výstupní proud	67.1 A	Analogový vstup	5.24 V	TEPLOTA VINUTÍ MOTORU
Příkon motoru	32.0 kW	Diferenční tlak filtru	1310 Pa	

### Nastavení filtru

Diferenční tlak varování před zanesením: 1800 Pa VAROVÁNÍ

Diferenční tlak zanesení filtru (havárie): 2200 Pa HAVARIE

### Statistiky filtru

	DNES	VČERA	MĚSIC	ROK	CELKEM
Délka chodu	5 : 48	5 : 33	78 hod	217 hod	785 hod
Odběr el. energie	187.1 kWh	165.7 kWh	2375.5 kWh	5.3 MWh	

Historie záznamů << 0 >>

Den	Motohodiny	Odběr [kWh]
01.03.24	6.4	204.2
02.03.24	5.4	171.6
03.03.24	0.0	0.0
04.03.24	0.5	2.5
05.03.24	3.7	109.5
06.03.24	9.9	307.3
07.03.24	6.5	199.0
08.03.24	5.7	172.9
09.03.24	0.8	16.6
10.03.24	0.0	0.0
11.03.24	0.0	0.0
12.03.24	6.7	199.5
13.03.24	9.4	290.5
14.03.24	6.3	187.9
15.03.24	5.7	174.1
16.03.24	6.4	191.3

Komunikace OK

Servisní zázpisník

Servisní informace

258

